

WANAQUE

Preschool Integrated Program

The Wanaque Public School District is accepting applications for the integrated preschool program for the 2023-2024 school year.

The program offers an include and engaging educational curriculum that is aligned with the NJ Department of Education's Preschool Teaching and Learning Expectations as well as Wanaque's district-wide initiatives.

The Curriculum emphasizes a whole-child approach to education, one where children have opportunities to develop not only math and literacy skills but also social-emotional, physical, and cognitive skills.



Having your child participate in the Preschool Integrated Program (PIP) provides them with kindergarten readiness skills in an inclusive and nurturing learning environment.

Preschool Integrated Program

- School Year Program for Three (3) & Four (4) Year Old's
- Three before Oct 1– Morning Program 9-11:30am
- Four before Oct 1– Afternoon Program 12:30-3pm
- Five Days per Week , follows K-8 School Calendar
- Held at both Haskell & Wanaque Schools
- Innovative, Research- Based Curriculum
- Pre-Registration available on our Website
- Limited Number of Seats, first come first serve

Preschool Integrated Program

Contact :

Mrs. Marybeth Diehl, CST Secretary

mdiehl@wanaqueps.org

Department of Special Services

973 Ringwood Avenue, Haskell

Phone| 973.835.8200 x 1540

www.wanaqueps.org



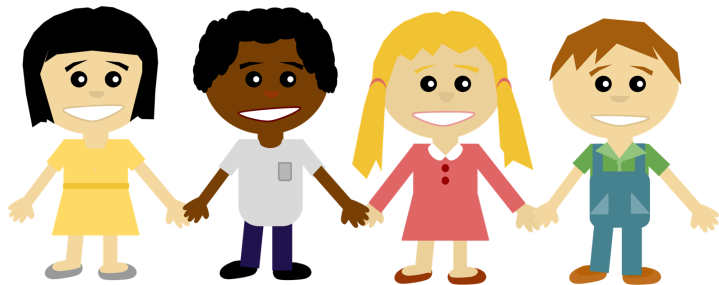
PRESCHOOL INTEGRATED PROGRAM

Preschoolers
Learning and Growing Together

Why Choose the Preschool Integrated Program?

Preschool Integration Program offers an inclusive learning environment at the very start of a child's education.

If you have further questions, please contact **Mrs. Marybeth Diehl**, CST Secretary, at 973-835-8200 (x1540) or email mdiehl@wanaqueps.org.



Preschool Integrated Program

This tuition based program is offered to Wanaque & Haskell children who will turn 3 or 4 before Oct 1, 2023 and are toilet trained.

The program follows the official school calendar and runs 5 days a week in 2 sessions. 3 year old's attend the morning session from 9-11:30am and 4 year old's attend the afternoon session from 12:30-3pm.

The class is taught by a dually certified teacher (p-3 and Special Education) and a teaching assistant.

Fees & Tuition

Full year tuition for this program is \$4,500. A deposit of \$900 is due at the time of registration to hold your spot in class. Three (3) additional payments are due in August, November & February in the amount of \$1,200.

The Preschool Curriculum

The Wanaque Public School District's has incorporated the Preschool Teaching and Learning Standards to all District Preschool Integrated Programs. The Preschool Teaching and Learning Standards focus on the following domains of child development: Social/Emotional Development, Visual and Performing Arts, Health, Safety, and Physical Education, English Language Arts, Approaches to Learning, Mathematics, Science, Social Studies, Family, and Life Skills. Our Preschool Integrated Program uses The Creative Curriculum, an inclusive, research-based program aligned with the New Jersey Preschool Teaching and Learning Standards. The Creative Curriculum emphasizes a whole-child approach to education, one where children have opportunities to develop not only math and literacy skills but also social-emotional, physical, and cognitive skills. The program's curriculum is designed to provide the supports and services needed for our students to be prepared to succeed academically and socially in school.